

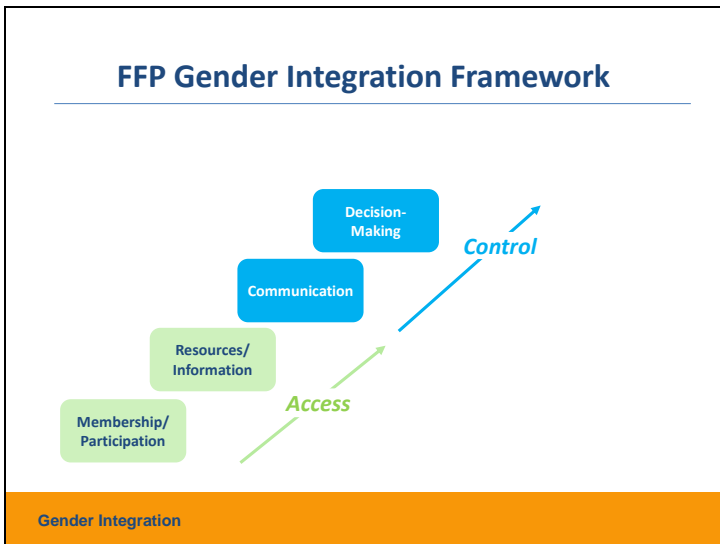
Slide 9

Gender Integration as a Cross-Cutting Theme

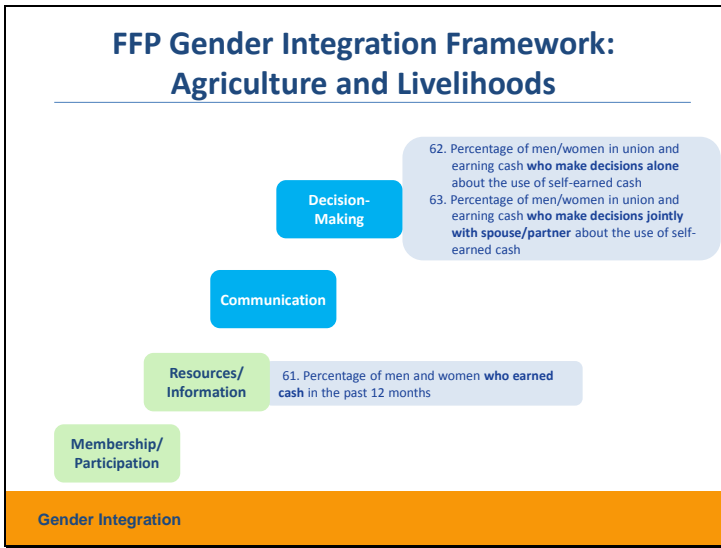
| ELEMENT | Agriculture and livelihoods | Maternal and child health and nutrition (MCHN) |
|----------------------------|---|---|
| FFP FIRST-LEVEL OBJECTIVES | Improved agricultural sector growth | Improved nutritional status, especially of women and children |
| PROJECT PURPOSE | Example: <i>Vulnerable households' net income increased</i> | Example: <i>Chronic malnutrition among vulnerable rural populations in targeted micro-watershed reduced</i> |

Gender Integration

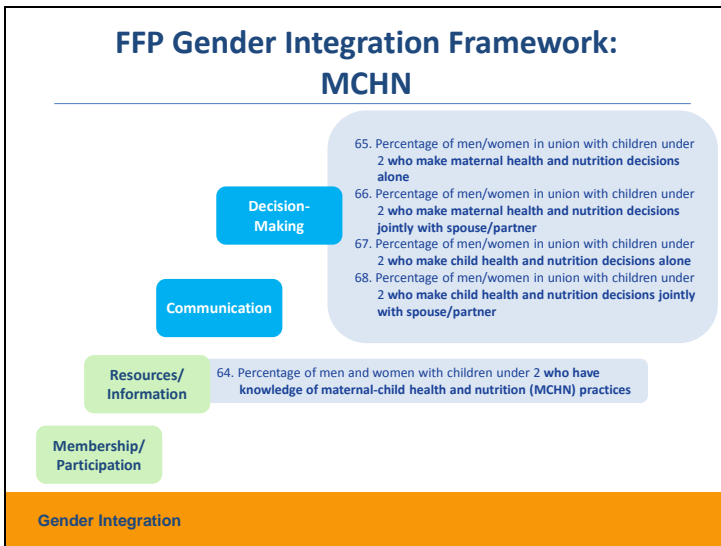
Slide 10



Slide 11



Slide 12



Slide 13

Resources

McNairn, Rosemarie M. and Sethuraman, Kavita. 2011. *Gender Integration in USAID Bureau for Democracy, Conflict, and Humanitarian Assistance Office of Food for Peace Operations: Occasional Paper #7*. Washington, DC: FANTA.
http://pdf.usaid.gov/pdf_docs/pnadz581.pdf

USAID. 2012. Gender Equality and Female Empowerment Policy. USAID Policy.
https://www.usaid.gov/sites/default/files/documents/1865/GenderEqualityPolicy_0.pdf

USAID. 2013. ADS Chapter 205. Integrating Gender Equality and Female Empowerment in USAID's Program Cycle.
<http://www.usaid.gov/ads/policy/200/205>

Demographic and Health Surveys:
<http://dhsprogram.com/publications/publication-dhsm-dhs-questionnaires-and-manuals.cfm>

Gender Integration

Slide 14



This presentation is made possible by the generous support of the American people through the support of the Office of Health, Infectious Diseases, and Nutrition, Bureau for Global Health, and the Office of Food for Peace, Bureau for Democracy, Conflict, and Humanitarian Assistance, United States Agency for International Development (USAID), under terms of Cooperative Agreement No. AID-OAA-A-12-00005, through the Food and Nutrition Technical Assistance III Project (FANTA), managed by FHI 360. The contents are the responsibility of FHI 360 and do not necessarily reflect the views of USAID or the United States Government.

Gender Integration

Handout 1. Gender Integration Framework and Illustrative Activities

Agriculture and Livelihoods

| | |
|--|---|
| <p>DECISION-MAKING</p> | <p><i>Illustrative Activities</i></p> <ul style="list-style-type: none"> • Facilitate gender sensitization trainings to facilitate joint household planning activities between men and women. |
| <p>COMMUNICATION</p> | <ul style="list-style-type: none"> • Work with communities and families to ensure that women can sell assets (e.g., livestock). |
| <p>RESOURCES/INFORMATION</p> | <p><i>Illustrative Activities</i></p> <ul style="list-style-type: none"> • Target and time training activities to reach and accommodate women's and men's needs and constraints. • Provide assets (e.g., livestock) to men and women. • Interact with male members of household and religious or traditional leaders to negotiate women's involvement and community acceptance of women's participation. |
| <p>MEMBERSHIP/PARTICIPATION</p> | <p><i>Illustrative Activities</i></p> <ul style="list-style-type: none"> • Encourage both men and women to join farmers associations, credit, and microfinance groups. • Establish both men and women farming associations, credit, and microfinance groups. |

Maternal and Child Health and Nutrition (MCHN)

| | |
|---------------------------------|---|
| DECISION-MAKING | <i>Illustrative Activities</i> <ul style="list-style-type: none"> • Work with couples on promoting dialogue through trials of improved practices (TIPS) for joint decisions on infant and young child feeding. • Community mobilization, social and behavior change activities, and involving decision makers and local leaders to change attitudes regarding men’s involvement in MCHN and raising awareness of gender-sensitive MCHN services. |
| COMMUNICATION | |
| RESOURCES/INFORMATION | <i>Illustrative Activities</i> <ul style="list-style-type: none"> • Peer-to-peer activities with men (e.g., men’s groups) that share information on gender issues in support of optimal young child and maternal nutrition practices. • Promote men’s participation in health and nutrition visits for women and children. • Conduct growth promotion and counseling sessions involving mothers and fathers. |
| MEMBERSHIP/PARTICIPATION | <i>Illustrative Activities</i> <ul style="list-style-type: none"> • Include care groups for mothers and fathers. |