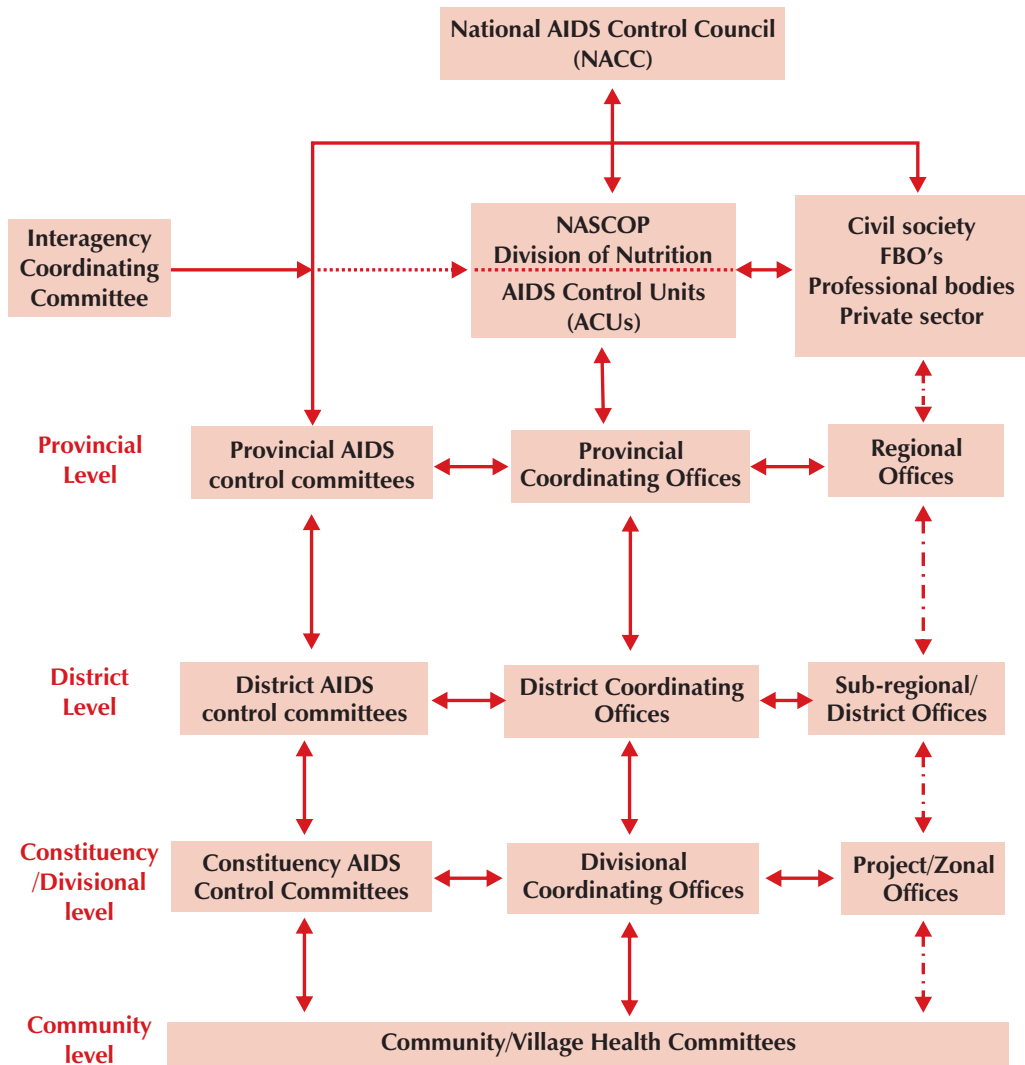


Annexes

ANNEX 1: Framework for the National Nutrition Intervention in HIV/AIDS



ANNEX 2: Health Facilities and Services

Distribution of Health Facilities by KEPH Levels and Ownership

KEPH levels of care	Ownership				Total
	GoK	Mission	NGO	Private	
Dispensary	1,633	451	52	142	2,278
Clinic	30	51	27	1588	1696
VCT centre	5	7	1	28	41
Health centre	521	114	5	20	660
Nursing homes	4	5	5	175	189
Primary, secondary and tertiary hospitals	158	70	3	70	301
Total	2,351	698	93	2,023	5,165

Health Service Delivery and Facility and Ownership

Service type	GoK (n=2,351)	Mission (n=698)	NGO (n=93)	Private (n=2,023)	Total number of facilities
PMTCT	471	114	22	206	813
HIV counselling & VCT	441	106	19	220	786
ART available	203	76	8	174	461
TB diagnosis routinely performed	596	145	21	208	970
TB diagnostic laboratory available	625	141	19	199	984
TB treatment available	1,033	178	18	208	1,437
Caesarean section routinely performed	137	68	7	185	397
Emergency blood transfusion	156	73	9	171	409
HBC services available	213	78	11	176	478

ANNEX 3: Health Facilities by Province

Distribution of Health Facilities by Province and Facility Type

FACILITY TYPE	CENTRAL	COAST	EASTERN	NAIROBI	NORTH EASTERN	NYANZA VALLEY	RIFT	WESTERN	TOTAL
Dispensaries	205	144	325	18	43	180	540	81	1,527
Health Centres	57	33	58	8	6	80	136	62	440
District Hospitals	12	11	26	1	10	24	21	13	118
Provincial Hospitals	1	1	2	-	1	1	1	1	8
National and Specialized Hospitals	1	-	-	2	-	-	-	-	3
Rural Health Training and Demonstration Centres	1	15	7	-	5	6	12	7	53
Total Facilities	277	204	418	29	65	291	710	164	2,158
Facilities %	12.8	9.5	19.4	1.3	3.0	13.5	32.9	7.6	100.0
Population	3,918,538	2,860,649	5,180,139	2,656,997	1,235,592	4,868,010	8,077,517	3,954,081	32,751,523
Population per Facility	14,095	14,022	12,393	91,620	19,009	16,728	11,376	23,964	15,176
Facilities per 100,000 population	7.0	7.0	8.0	1.0	5.0	6.0	9.0	4.0	7.0